

I-CASH ANNUAL REPORT 2017

In October of 2016, a 22-month-old boy died after falling from a skid-steer loader.

In January of 2017, one man was killed and another seriously injured when the tractor they were repairing slipped into gear and ran over them.

In May of 2017, a 20-year-old female intern at an Iowa grain co-op had her hair caught in a running PTO shaft. Despite a 12-hour surgery, doctors were unable to reattach her hair and scalp.

These are just a few of the stories that will become part of Iowa's farm injury and fatality statistics. In 2016, according to the Central States Center for Agricultural Safety and Health at the University of Nebraska, there were 23 agriculturally related fatalities in Iowa. The Bureau of Labor Statistics consistently finds that **fatal injury rates are higher in agriculture than any other industry in our state.**

Every agricultural injury or fatality is preventable; these numbers are simply unacceptable.

I-CASH works to improve safety and health on Iowa's farms by establishing and coordinating prevention and education programs. In the pages that follow, we'll share what we've done to **improve awareness**, **emphasize prevention**, and **engage stakeholders** throughout the agricultural industry to keep our workforce safe and healthy.



The Mission of I-CASH is to enhance the health and safety of Iowa’s agricultural community by establishing and coordinating prevention and education programs.

I-CASH’S INSTITUTIONAL PARTNERS PROVIDE

EMERGING ISSUES	RESEARCH	DEVELOPMENT
<p>The Iowa Department of Public Health (IDPH) and the State Office of Rural Health provide surveillance of the burden of injury and illness in Iowa agriculture.</p> <p>Iowa Concern Hotline identifies emerging issues in rural communities. In the past year, the hotline received 8,552 calls, 25% relating to agriculture.</p>	<p>The University of Iowa (UI) conducts research identifying best practices for prevention. Recent topics include rural roadway safety in the Midwest, pesticide exposure, air quality in livestock confinements, ATV use in agriculture, and the effect of whole body vibration resulting from farm equipment use.</p>	<p>I-CASH staff and advisory board members develop prevention tools and resources for farmers, farmworkers, rural health care providers, extension offices, Farm Service Agency (FSA) offices, and other members of the agricultural community.</p>

**Farm Safety Week
Op-Ed signed
by leadership of
ISU, IDALS, UI,
and IDPH**

In fall of 2016, as part of the I-CASH Fall Seasonal Campaign and National Farm Safety and Health Week, an op-ed emphasizing safe farm practices and the legacy of agriculture in Iowa was distributed statewide. Signed by Gerd Clabaugh, Director, IDPH; Sue Curry, Dean, University of Iowa College of Public Health; Bill Northey, Iowa Secretary of Agriculture; and Wendy Wintersteen, Dean, Iowa State University College of Agriculture and Life Sciences, the letter reminded readers that “Iowa’s farmers are the foundation of our most important economic industry, but the high rates of injuries, illnesses, and fatalities that come with farming put the legacy of agriculture at risk.”



CRITICAL CONTRIBUTIONS TO OUR MISSION

ENGAGEMENT

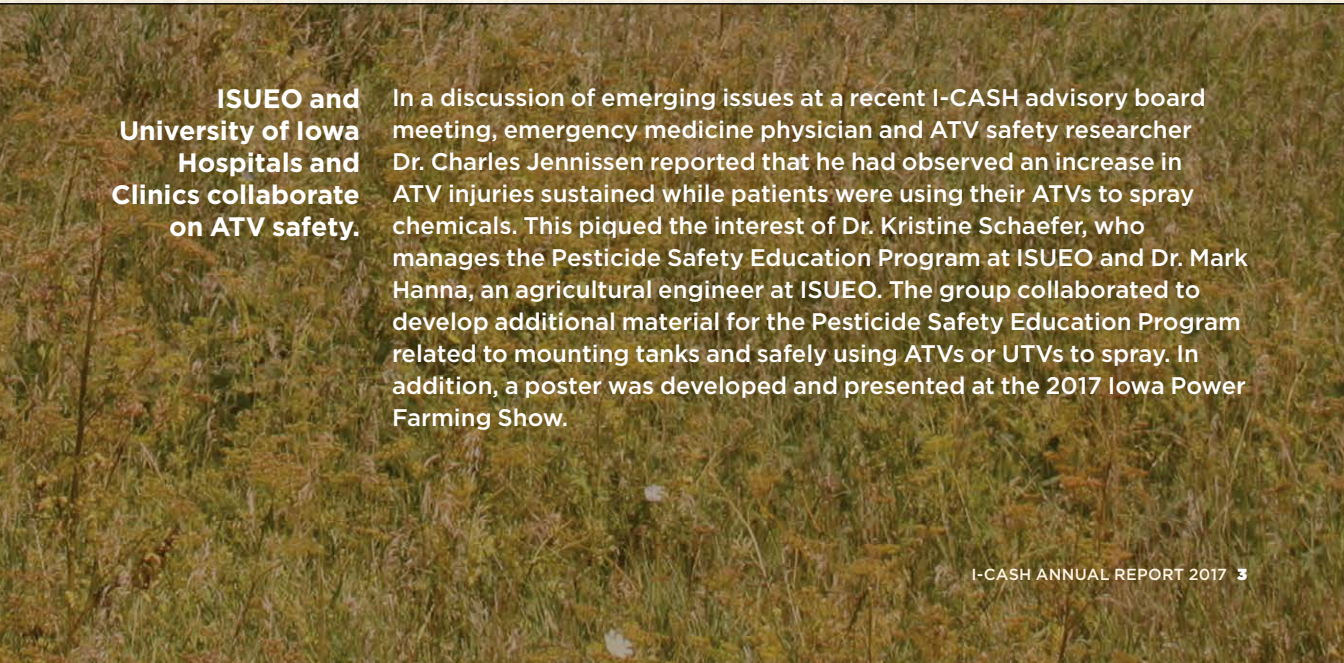
Our partners help us stay **connected and responsive** to emerging issues in Iowa agriculture:

Iowa State University Extension and Outreach (ISUEO) and the Iowa Department of Agriculture and Land Stewardship (IDALS) coordinate pesticide trainings across the state. Through this training, information on pesticide handling and proper personal protective equipment use was presented to over **25,000 private and commercial pesticide applicators**.

ISUEO conducted safety events throughout the state, **reaching 412 youth, and updated 28 safety publications, which were downloaded over 10,000 times** from the ISUEO online store.

Mobile clinics organized by Proteus, Inc. reached more than **1,500 migrant and seasonal farmworkers** in Iowa; Rural Health and Safety of Eastern Iowa workshops provided ATV safety education to **over 1,000 Iowa youth**.

Agricultural Safety and Health: The Core Course, based at the University of Iowa, trained **over 30 health care providers, rural pharmacists, veterinarians, and public health professionals**.



ISUEO and University of Iowa Hospitals and Clinics collaborate on ATV safety.

In a discussion of emerging issues at a recent I-CASH advisory board meeting, emergency medicine physician and ATV safety researcher Dr. Charles Jennissen reported that he had observed an increase in ATV injuries sustained while patients were using their ATVs to spray chemicals. This piqued the interest of Dr. Kristine Schaefer, who manages the Pesticide Safety Education Program at ISUEO and Dr. Mark Hanna, an agricultural engineer at ISUEO. The group collaborated to develop additional material for the Pesticide Safety Education Program related to mounting tanks and safely using ATVs or UTVs to spray. In addition, a poster was developed and presented at the 2017 Iowa Power Farming Show.

IMPROVE AWARENESS

SEASONAL CAMPAIGNS

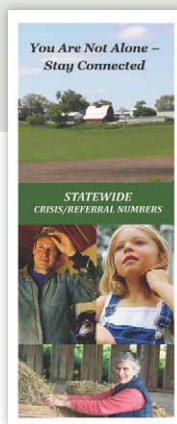
I-CASH Seasonal Campaigns distribute seasonally appropriate safety and health education materials. In the past year, I-CASH reached every ISUEO and FSA office in the state each season.



FALL

"Farm Safety...A legacy to be proud of"

The fall campaign shared the theme of National Farm Safety and Health Week, "Farm Safety...A legacy to be proud of" by providing flashlights (reminding people that "a safe farm has a bright future") to 25 ISUEO offices and FSA offices, and posters to all FSA and ISUEO offices. In addition, an op-ed signed by the leadership of IDPH, IDALS, ISU College of Agriculture, and UI College of Public Health was distributed through the Iowa Newspaper Association.



WINTER

Mental and Behavioral Health

The winter campaign focused on mental and behavioral health, a complex and challenging topic. The campaign began with an article in Iowa Farmer Today (Suicide Rates of Farmers at Historic High) on December 10, 2016. Carabiners with hotline phone numbers attached were distributed to 25 ISUEO and FSA offices. Brochures containing crisis and mental health hotline information were distributed to all ISUEO and FSA offices.



SPRING

Handle Chemicals with Care

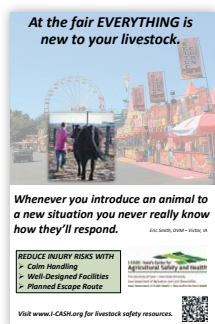
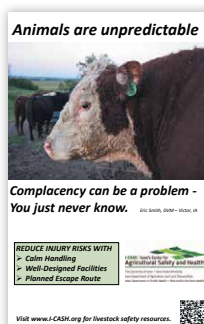
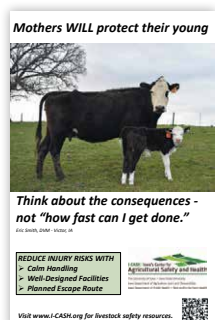
This campaign focused on chemical resistant glove use. Chemical handling information cards were distributed to all ISUEO and FSA offices in the state. In addition, samples of chemical-resistant gloves were sent to 25 FSA and 25 ISUEO offices.



SUMMER

Livestock Safety

The summer focus was on livestock safety, both on the farm and at the fair. Posters were distributed to all FSA and ISUEO offices, and an interview with veterinarian Dr. Eric Smith was featured in Iowa Farmer Today's Safety Watch Series.



I-CASH staff attended or had exhibits at
9 conferences and field days

I-CASH reached over
3,000 households each quarter
with the Alive and Well Newsletter

I-CASH collaborated with the State Office of
Rural Health to conduct telephone interviews
with Iowa's rural health clinics to
improve statewide services



“Iowa has a lot of interested players in agricultural safety and health, I-CASH is a place for them to come together to network and communicate.”

MARK HANNA, EXTENSION AGRICULTURAL ENGINEER, ISUEO



I-CASH IMPROVES AWARENESS

This year I-CASH staff and advisory board members:

- Reached every **ISUEO** and **FSA** office in the state **four times** with prevention messages related to seasonally appropriate topics.
- Provided extra Seasonal Campaign materials resulting in **an additional 200 Iowans** receiving resources related to mental and behavioral health services.
- Provided **37 presentations** on topics including pesticide exposure, respiratory protection in agriculture, safety for beginning farmers, and livestock handling safety.
- Were **regularly featured in print and radio media** including outlets such as The Des Moines Register, Iowa City Press-Citizen, River to River (Iowa Public Radio), Talk of Iowa (Iowa Public Radio), and Iowa Farmer Today.
- Authored **six Safety Watch columns for Iowa Farmer Today**, distributed to Missouri Farmer Today, Illinois Farmer Today, and AgUpdate.com:
 - Responders Prep for Safe Harvest
 - Farming with Diabetes Requires Balancing Act
 - Suicide Rate Among Farmers at Historic High
 - Small Steps Affect Beginning Farmers' Safety
 - Standard Expands Respiratory Protection
 - Expect the Unexpected when Handling Livestock

EMPHASIZE PREVENTION

MIDWEST RURAL AGRICULTURAL SAFETY AND HEALTH CONFERENCE

“I learned so much at this conference, and I will take back an ability to change the culture of my company towards safety.”

The 15th annual Midwest Rural Agricultural Safety and Health (MRASH) Conference was held November 15-16 in Sioux Center, featuring the first ever Agricultural Health Fair and Safety Exposition. The conference kicked off with a keynote by Wayne Bauer, former international president of the Grain Elevator and Processing Society and founder of the Grain Entrapment Prevention Initiative, and a panel presentation focusing on Prevention by Design. Several breakout sessions and poster topics were offered on various subjects, with a number of new organizations represented.

On the second day of the conference, panels on immigrant farm worker issues and grain handling safety provided personal perspectives and excellent discussion. The conference closed with

the awards luncheon and I-CASH Hall of Fame presentation to Dan Neenan, director of the National Education Center for Agricultural Safety (NECAS). The Butler County 4-H Youth Council received the 2016 Outstanding Youth Grant Award. The youth group developed permanent animal handling safety signs for the livestock barns at the Butler County Fair and distributed first aid kits.

Following the conference, the Agricultural Health Fair and Safety Exposition featured a mix of local, state and regional organizations where exhibitors were able to share resources with participants. Over 20 Dordt College students from the agriculture program and nursing department participated in the conference this year displaying their research posters at the reception and the health fair.

The Butler County 4-H Youth Council received the 2016 I-CASH Outstanding Youth Grant Award at the MRASH Conference.



55

participants from seven US states and Canada attended the MRASH Conference.

85%

of participants believed the conference would result in stronger collaborative relationships among producers, agribusiness, researchers, policy makers, and agricultural health and safety partners.

82%

of participants gained a better understanding of the occupational hazards experienced by farmers and farm workers as a result of the conference.



“I was amazed at the people. There was a passion for health and safety.”

AGRICULTURAL YOUTH INJURY PREVENTION GRANTS

Each year I-CASH designates funds for community grants aimed at the prevention of farm-related injury. In 2017 ten projects were awarded. These projects reached 537 farmers and 1,652 youth across Iowa.



CHEROKEE COUNTY FARM BUREAU, CHEROKEE

Educational outreach to fourth grade students focused on improving their understanding of on-farm hazards. Topics included chemical safety and comprehensive tractor safety, which addressed Slow Moving Vehicle (SMV) emblems, moving parts, falls, and PTO and hydraulic safety.



CLAYTON COUNTY EXTENSION AND OUTREACH, ELKADER

A Safety Day for all Clayton County 4th graders was held at the county fairgrounds. Youth from five area schools circulated through sessions on safety topics, including propane gas safety, ATV safety, fire safety, electrical safety, animal safety, and PTO safety.

DAVIS-RODGERS FFA CHAPTER, SHENANDOAH

Elementary students constructed a Hidden Hazards on the Farm display to be shared with the rest of the school and at the county fair.

IDA COUNTY FARM BUREAU, IDA GROVE

Partnering with the local fire department, sheriff's department, Northwest REC, Ida County Extension, and the local FFA chapters, a farm safety event was held that focused on livestock, chemicals, equipment, anhydrous safety, grain bin safety, and ATVs.

MILES MAVERICKS 4-H CLUB, MAQUOKETA

4-H youth purchased and distributed signs to producers warning of dangerous manure pit gases. In addition, educational displays were developed with the ISUEO Beef and Forage Specialist and the Agricultural Engineering Specialist for use at county fairs and producer banquets.

MITCHELL COUNTY 4-H, OSAGE

High school students planned and delivered educational outreach to 4th grade students. The sessions involved demonstrations and activities focusing on ATV and lawn mower safety.

NEMAHA 4-H CLUB, NEMAHA

Animal handling and syringe safety were the focus of a display created for the county fair's Ag Learning Barn. The multi-purpose display will also be used at events for educational presentations, and as a backdrop for resource and product distribution.



POWESHIEK COUNTY EXTENSION AND OUTREACH, MONTEZUMA

An Ag Safety Day was held at the Poweshiek County Fairgrounds with 10 different safety stations; topics included fire safety, livestock, and ATV and lawnmower safety.

WASHINGTON COUNTY 4-H AND EXTENSION, WASHINGTON

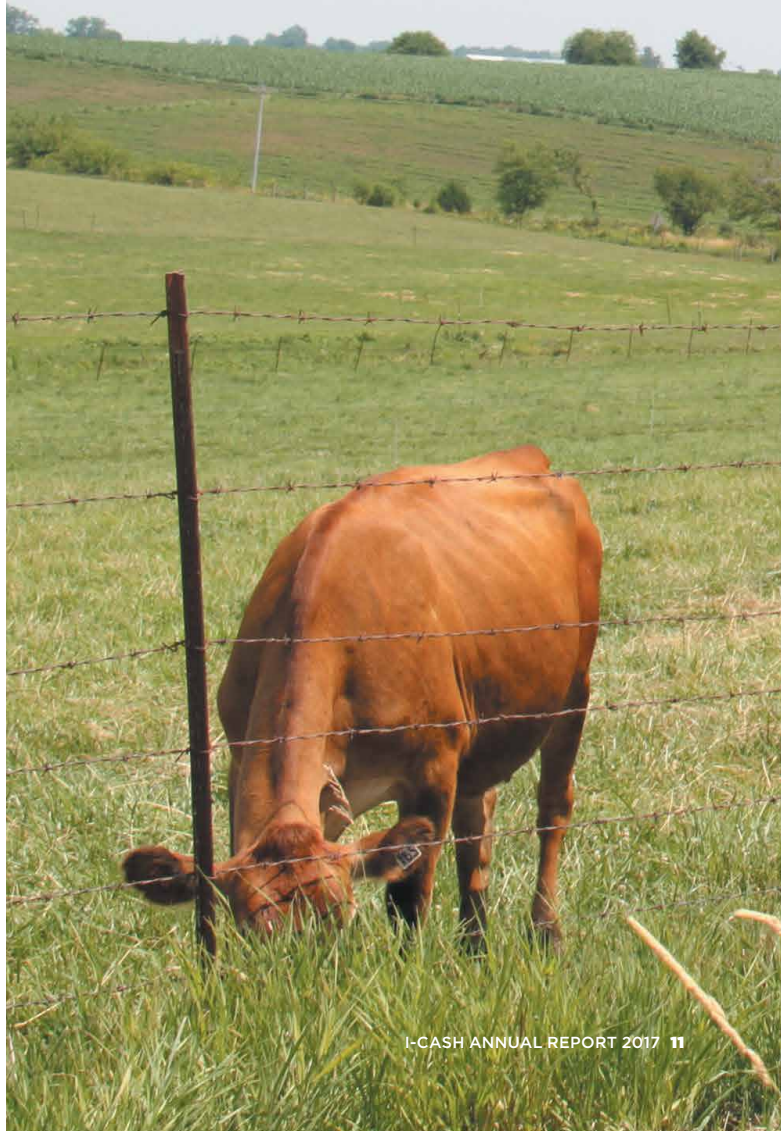
The Stay Safe, Take a Break project centers on farmers and farm families during the busy and long hours of harvest season. The 4-H County Council youth select, purchase, and deliver bags of items to farmers in the fields during harvest season, promoting safety and encouraging farmers to take a break.

WRIGHT COUNTY FARM BUREAU, CLARION

The Safety Day Camp for 3rd graders focused on how to call 9-1-1, safety around large equipment, and chemical safety.

Grow: Johnson County

Grow: Johnson County (GJC) is a hunger-relief and educational farm initiative focused on reducing food insecurity and training new local growers. Based at the Johnson County Poor Farm in Iowa City, organic fruits and vegetables are grown and donated to local hunger-relief agencies. The project provides hands-on gardening and farming experience for community members of all ages and backgrounds. **Recognizing a need for safety programming, GJC commissioned I-CASH to conduct a safety audit and develop guidelines for the 200 volunteers who work at the site each year.**



ENGAGE STAKEHOLDERS

“I-CASH provides a place where a lot of different collaborators and sectors can come together to address an issue important to all of us.”

JAKE SWANSON
SPECIAL ASSISTANT TO
THE IOWA SECRETARY OF
AGRICULTURE, IDALS

“The synergy is one of the best things about I-CASH; working together really benefits all of us.”

KATHY LEINENKUGEL
MANAGER, OCCUPATIONAL
HEALTH & SAFETY
SURVEILLANCE PROGRAM, IDPH

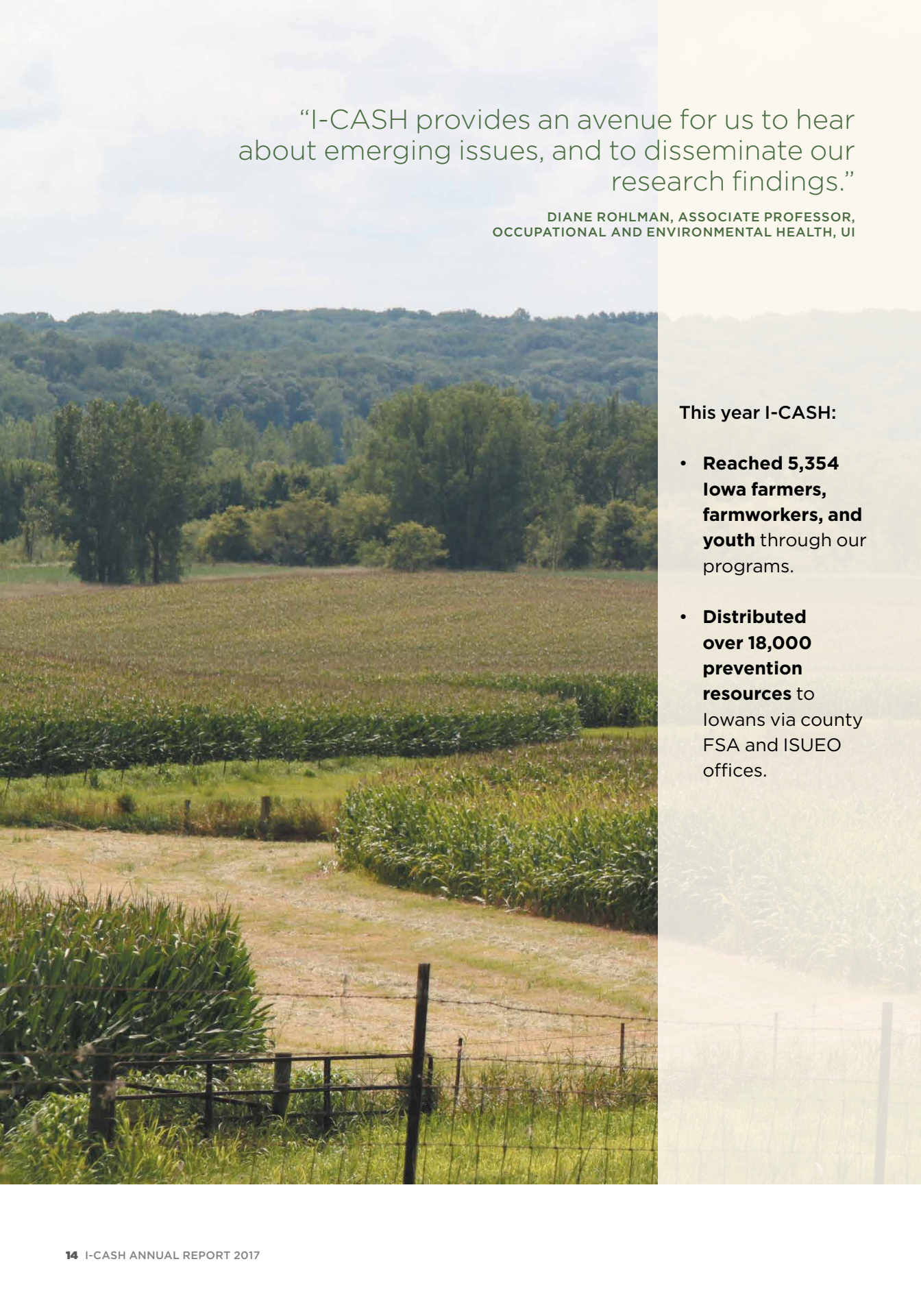
HALL OF FAME

Dan Neenan, director of NECAS, received the 2016 I-CASH Hall of Fame Award at the MRASH Conference in Sioux Center, IA. Created in 2002, the award recognizes individuals or organizations that have made significant contributions to agricultural safety and health in Iowa. A trained first responder, Dan serves as a Paramedic Specialist and Fire-fighter II with the Epworth and Centralia/Peosta Fire Departments. He serves on the Iowa EMS and I-CASH advisory boards, chairs the Iowa Community College Fire Program Manager task force, is treasurer of the Dubuque County EMS Association, and has served on the Progressive Ag Foundation Board.

Dan has conducted numerous education programs at NECAS, as well as throughout Iowa and the US. He developed traveling confined space demonstrations, related to both grain rescue and manure pits, that have been extremely effective for training first responders, farmers, and employees about the hazards, prevention strategies, as well as the rescue methods in response to confined space incidents. Dan's trainings not only exceed their objectives, they save lives. His grain rescue training has resulted in communities taking successful action when grain entrapment occurs. Dan is a regular lecturer at the University of Iowa's courses in Agricultural Safety and Health and regularly hosts very successful farm safety days for youth at his center.

Photo: UI College
of Public Health
Communications
Office.





“I-CASH provides an avenue for us to hear about emerging issues, and to disseminate our research findings.”

DIANE ROHLMAN, ASSOCIATE PROFESSOR,
OCCUPATIONAL AND ENVIRONMENTAL HEALTH, UI

This year I-CASH:

- **Reached 5,354 Iowa farmers, farmworkers, and youth** through our programs.
- **Distributed over 18,000 prevention resources** to Iowans via county FSA and ISUEO offices.

I-CASH ENGAGES STAKEHOLDERS

I-CASH has an active advisory board of 23 people, including farmers, agribusiness representatives, state legislators, public health professionals, researchers, and health care providers.

STAFF

Brandi Janssen, PHD, I-CASH Director
Ralph Altmaier, MS, Administrative Services Coordinator
Kyle Godwin, Program Assistant
Kay Mohling, MA, Program Coordinator
Matthew Nonnenmann, PHD, Assistant Professor
Gayle Olson, MS, CHES, Assistant to the Director
DeAnn Scott-Harp, Program Assistant

ADVISORY BOARD

Kelley Donham – Rural Health and Safety of Eastern Iowa
Bill Furlong – Producer
Rich Gassman – Feed Energy Company
Mark H. Hanna – Iowa State University
Megan Hartwig – Iowa Department of Public Health
Charles Jennissen – University of Iowa Hospitals & Clinics
Tim Kapucian – State Senator, District 38
Rawlin Kinney – Syngenta
Kathy Leinenkugel – Iowa Department of Public Health
Norlin Mommsen – State Representative, District 97
Dan Neenan – National Education Center for Agricultural Safety
Chris Petersen – Producer
Sonia Reyes-Snyder – Iowa Department of Human Rights
Diane Rohlman – University of Iowa
Kristine Schaefer – Iowa State University
Carolyn Sheridan – AgriSafe Network
Roger Stutsman – Producer
Jacob Swanson – Iowa Department of Agriculture & Land Stewardship
Patrick Taggart – Proteus, Inc.
Cheryl Tevis – Iowa Women in Agriculture
Margaret Van Ginkel – Iowa Concern Hotline
Dustin Vande Hoef – Iowa Department of Agriculture & Land Stewardship
Rachel Young – University of Iowa





I-CASH | Iowa's Center for Agricultural Safety and Health

The University of Iowa ■ Iowa State University
Iowa Department of Agriculture and Land Stewardship
Iowa Department of Public Health ■ Non-profits for Farm Health

Iowa's Center for Agricultural Safety and Health
Department of Occupational and
Environmental Health
College of Public Health
UI Research Park #124 IREH
Iowa City, Iowa 52242-5000
Phone 319/335-4190

www.i-cash.org

Design: Benson & Hepker Design
Editor: Kay Mohling
Photos: Patti Zwick and DeAnn Scott-Harp

The University of Iowa prohibits discrimination in employment, educational programs, and activities on the basis of race, creed, color, religion, national origin, age, sex, pregnancy, disability, genetic information, status as a U.S. veteran, service in the U.S. military, sexual orientation, gender identity, associational preferences, or any other classification that deprives the person of consideration as an individual. The university also affirms its commitment to providing equal opportunities and equal access to university facilities. For additional information on nondiscrimination policies, contact the Director, Office of Equal Opportunity and Diversity, the University of Iowa, 202 Jessup Hall, Iowa City, IA 52242-1316, 319-335-0705 (voice), 319-335-0697 (TDD), diversity@uiowa.edu.